

# NCP – Network Communication Platform

KX-NCP500/1000

Enhanced Communications Solutions



**Panasonic ideas for life**



# When it's **your business**, there's

## Panasonic Enhanced Communications Solutions

**Customized communication solutions for small to mid-size businesses that leverage today's best technologies.**

Using a combination of advanced telephony products along with other IP-enabled applications, Panasonic provides richer, fully-capable business communication solutions for your business today.

### **NCP – Reliable, Affordable, Flexible**

- Cordless desk handsets allow you to communicate anywhere in your building
- Voice mail messages can automatically be delivered to your email inbox and accessed via your PC, web-enabled cell phone or PDA
- Seamless connection of all of your business locations to a single phone system with fast 3 to 8-digit dialing to all employees

Panasonic NCP provides seamless integration with mobile phones, allowing remote and mobile colleagues to stay better connected—even while on the move. NCP Systems provide innovative IP telephony features and functionalities over both local office and broadband networks.

NCP can easily connect with an ever-growing list of providers offering SIP trunking services, an excellent way to maximize savings on your long distance charges. Panasonic assures out-of-the box functionality for a complete end-to-end solution.

### **Phones for Every Need**

Panasonic NCP systems give businesses a choice of the solutions that best suit their unique needs. The NCP platform supports stylish and intuitive IP telephones, SIP phones, IP conferencing phones, DECT 6.0 wireless phones and digital phones, while also supporting many previous Panasonic product models.





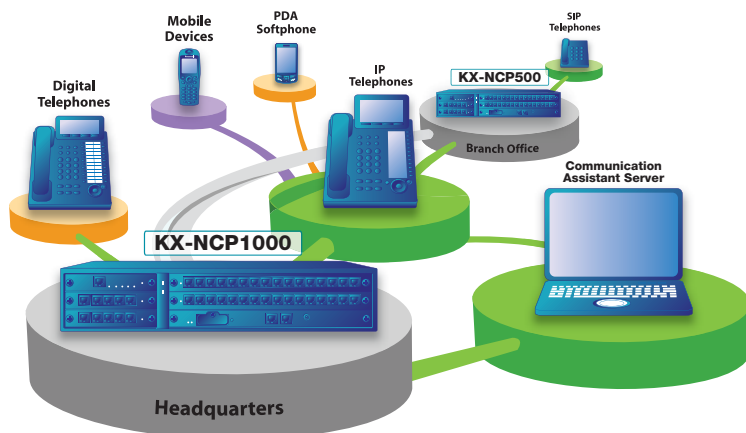
# nothing **small** about it.

## Anytime, Anywhere Communication

### Best-in-Class Wireless Solutions

Businesses are moving beyond the traditional desktop working environment with many employees going mobile—working from home, from airports and/or branch offices around the world. In such a dynamic environment, it's essential that businesses communicate effectively, anytime, anywhere.

Panasonic NCP systems help businesses stay in touch with everyone, wherever they may be, by adding value to business processes and allowing anytime, anywhere access to all communication.



▲ Access your phone system with any device.

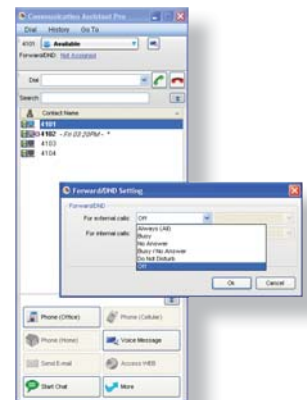
## Communication Assistant Productivity Application Suite

Harness the power of your NCP system with our ground-breaking Communication Assistant. This is a highly-intuitive PC-based application suite that provides the following key features:

- Enhanced Voice Messaging (VMA)
- Instant Messaging (Chat) and Presence Capabilities
- Microsoft® Outlook®, CRM (TAPI) and Third Party Database (LDAP) Contact Integration
- Softphone

In addition, you can access presence information on other Panasonic PBXs and initiate chat or make and transfer calls across the network (server version required).

Communication Assistant productivity software offers an affordable, flexible and reliable solution to help your business lower costs, increase revenue, improve customer satisfaction and increase employee productivity.



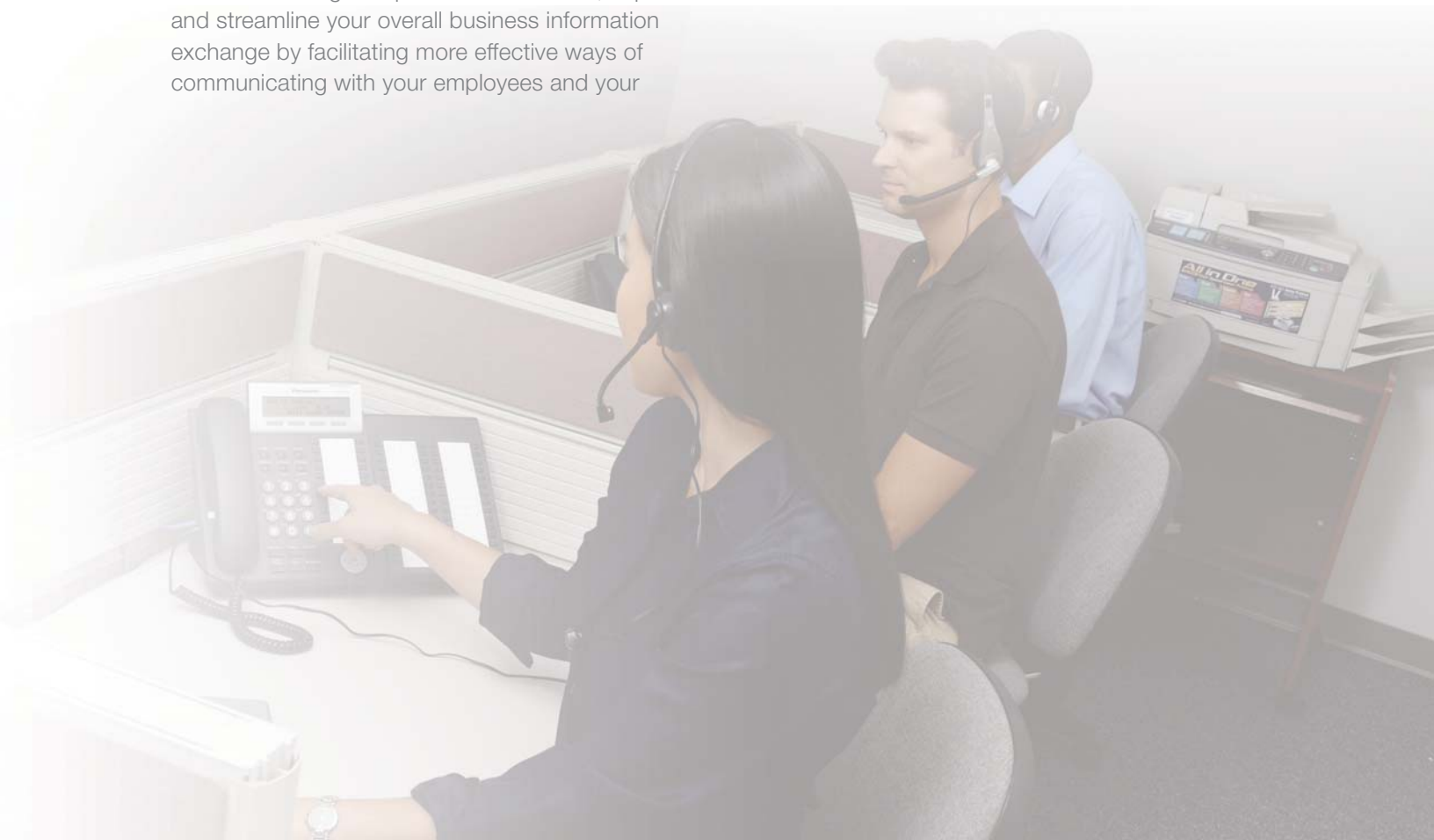


# nothing **small** about it.

## Every Call Matters

**Panasonic Network Communication Platforms** offer businesses like yours advanced, all-in-one solutions designed to meet your challenging communication needs. Productivity applications, including call center, Communication Assistant and visual monitoring for up to 172 extensions, improve and streamline your overall business information exchange by facilitating more effective ways of communicating with your employees and your

customers. NCP also allows anytime, anywhere access to a number of business communication applications through a wide range of smart and user-friendly wired and wireless devices.





## NCP – Key Benefits

The new Panasonic Network Communication Platform is highly-modular, and specifically designed to improve your business communication workflow. NCP systems allow you to effectively reach, serve and retain your customers by offering a powerful combination of intelligent call-routing, call center functionality and integral desktop productivity applications. Some key benefits include:

- Built-in voice messaging and Automated Attendant functionality
- Advanced voicemail using optional TVA50 and TVA200 voice processing systems
- Mobility applications that support mobile phones as office extensions
- Support for remote workers and remote offices
- Access to cordless handsets that work anywhere in your building
- Remote management, upgrades and monitoring for your phone system
- Desktop, network, and business application integration
- Communication Assistant call management software
- Built-in support for Advanced IP extensions, as well as SIP phones
- Integrated SIP solutions via SIP trunking providers for more affordable long-distance calling

NCP Network Communication Platform—an all-in-one communication, collaboration and monitoring solution for your business.

# System Capacity

Maximum CO Capacity	NCP500		NCP1000		
<b>Total number of CO Lines</b>	128		128		
Analog/PRI/T1	52		52		
IP Trunk	64		64		
H.323	32		32		
SIP	64		64		
Maximum Terminal Equipment					
<b>Telephone (Digital Extra Device Port)</b>	<b>156</b>	<b>172</b>	<b>Direct Station Selection Console</b>	<b>8</b>	<b>8</b>
Single Line Telephone	20	36	<b>Cell Station</b>	<b>4</b>	<b>8</b>
KX-T7600 series (DPT), DT300 series	24	40	<b>High-Density Cell Station</b>	<b>2</b>	<b>4</b>
Other Digital Proprietary Telephone	6	10	<b>IP Cell Station</b>	<b>16</b>	<b>16</b>
Analog Proprietary Telephone	4	4	<b>Wireless phone (portable station)</b>	<b>64</b>	<b>64</b>
IP Proprietary Telephone <sup>1</sup>	128 <sup>2</sup>	128 <sup>2</sup>	<b>Voice Processing System</b>	<b>2</b>	<b>2</b>
SIP Phone	128	128	<b>Doorphone</b>	<b>16</b>	<b>16</b>
			<b>Door Opener</b>	<b>16</b>	<b>16</b>
			<b>External Sensor</b>	<b>16</b>	<b>16</b>
			<b>External Relay</b>	<b>16</b>	<b>16</b>

1 KX-NT400, KX-NT300 series and KX-NT265 (software version 2.00 or later only) BTS090355QRG  
 2 For the KX-NT400, the maximum number of extensions that can be connected to the PBX is 64.

## Partial Phone Line-up

Consult [www.panasonic.com/ecs](http://www.panasonic.com/ecs) for additional models and information.

Phone Type	IP Proprietary Phones					Wireless Phones (DECT6.0)		
<b>KX-NCP500/1000 Converged IP-PBX Phone System</b>								
<b>Display(LCD) Lines/Characters</b>	5.7" color touch screen	6/24	6/24	3/24	1/16	6/16	6/16	6/16
<b>LCD Backlit</b>	Yes	Yes	Yes	Yes	Yes	Yes	Yes	Yes
<b>Headset Jack</b>	Yes	Yes	Yes	Yes	Yes	Yes	Yes	Yes
<b>Message Waiting LED</b>	Yes	Yes	Yes	Yes	Yes	Yes (Display)	Yes (Display)	Yes (Display)
<b>Speakerphone</b>	Digital Duplex	Digital Duplex	Digital Duplex	Digital Duplex	Yes	Digital Duplex	Digital Duplex	Digital Duplex
<b>Personal Speed Dial</b>	300*	100	100	100	100	100	100	100
<b>Alphanumeric Operation</b>	Yes	Yes	Yes	Yes	Yes	Yes	Yes	Yes
<b>Call Log (Incoming)</b>	100 Max	10 (100 Max)	10 (100 Max)	10 (100 Max)	10 (100 Max)	10 (100 Max)	10 (100 Max)	10 (100 Max)
<b>Call Log (Outgoing)</b>	100 Max	5 (100 Max)	5 (100 Max)	5 (100 Max)	5 (100 Max)	5 (100 Max)	5 (100 Max)	5 (100 Max)
<b>Function Button</b>	48(8x6 on LCD)	48 (12x4)	24	24	8	Yes**	Yes**	Yes**
<b>Interface for CTI (3rd party)</b>	PC LAN Port	PC LAN Port	PC LAN Port	PC LAN Port	PC LAN Port	-	-	-
<b>Add-on Key Module/DSS Console</b>	-/-	-	Yes	Yes	-	-	-	-
<b>Bluetooth Module</b>	Yes	Yes	Yes	Yes	-	-	-	-
<b>Self Labeling</b>	Yes	Yes	-	-	-	-	-	-
<b>Digital Extra Device Port</b>	-	-	-	-	-	Wireless XDP	Wireless XDP	Wireless XDP
<b>Navigation Key</b>	Yes	Yes	Yes	Yes	Yes	Yes	Yes	Yes
<b>Ringer Tone/Melody</b>	30	30	30	30	10	15+ vibration	15+ vibration	15+ vibration
<b>Wall Mounting</b>	Yes	Yes	Yes	Yes	Yes	Yes (Charger)	Yes (Charger)	Yes (Charger)
<b>Color</b>	Black	Black/White	Black/White	Black/White	Black/White	Silver	Silver	Black
<b>Special Features</b>	Netcam, Presence, IM <sup>1</sup>	-	-	-	-	-	-	Yes

### Advanced Digital Phones

**KX-DT346:** Digital Telephone with 24 buttons, 6-line backlit LCD and Speakerphone  
**KX-DT343:** Digital Telephone with 24 buttons, 3-line backlit LCD and Speakerphone  
**KX-DT333:** Digital Telephone with 24 buttons, 3-line LCD and Speakerphone  
**KX-DT321:** Digital Telephone with 8 buttons, 1-line backlit LCD and Speakerphone

1 Supports netcam integration, network presence, chat/IM with NT400 and CA.

2 IP Softphone keys include the KX-NCS3201 (1 user key), KX-NCS3204 (4 user), KX-NCS3208 (8 user), and KX-NCS3216 (16 user).

\* Contact directory \*\* Soft buttons on LCD

### Conference Speakerphone

**KX-NT700:** Conference Speakerphone PoE, SD card slot for recording. PSTN,IP,TDE/NCP-SIP extension, Cordless Phones Connectivity.

### SIP Phones

**KX-HGT100-B:** SIP Telephone with 2 line LCD and 2nd LAN port

### IP Softphone

**KX-NCS32XX<sup>2</sup>:** Easy-to-install software that turns any laptop or desktop PC into an extension of your NCP system.

### Panasonic System Networks Company of America

Executive Offices:  
 Three Panasonic Way, Secaucus, NJ 07094  
 (201) 348-7000

[www.panasonic.com/ecs](http://www.panasonic.com/ecs)

### Panasonic Customer Service

9 am - 9 pm (EST) Mon. through Fri.  
 10 am - 7 pm (EST) Sat. and Sun.  
 1-800-211-PANA